



**Come and see the waterwheel and Hindley steam engines under steam on open days.**

**SEE WEBSITE FOR DATES.**

## Visiting us:

Tea and coffee facilities available; free parking on site; picnic area; toilet.

Wheelchair access to most areas.

Group visits welcome by prior arrangement. Numbers may be restricted because of space constraints. Please contact the museum via the website.

***New members are always welcome - we need many skills and abilities to help look after the centre - do come and join us!***



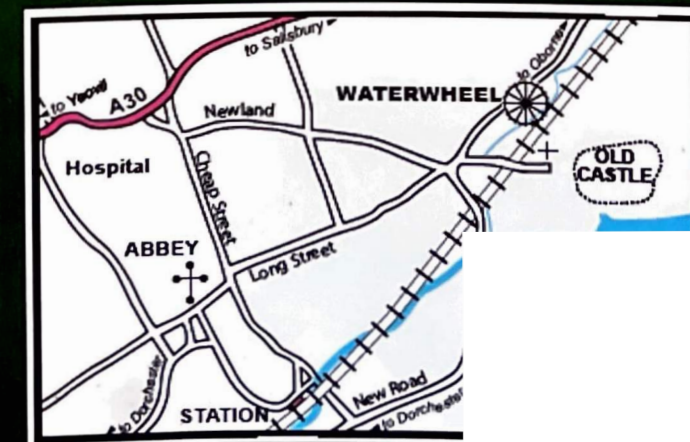
**[www.sswc.co.uk](http://www.sswc.co.uk)**

Registered charity no. 1099153

**Sherborne Steam & Waterwheel Centre**  
Oborne Road, Sherborne, Dorset DT9 3RX

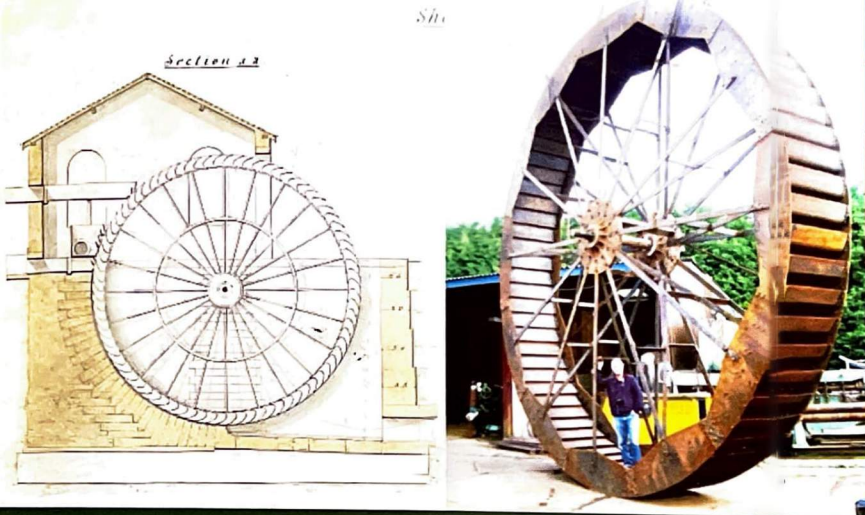


**Special events and Open days**



**[www.sswc.co.uk](http://www.sswc.co.uk)**





In 1981 the Castleton Museum Group was formed to save the old Pumphouse from demolition. The building and waterwheel have been restored and a new sluice gate installed on the Osborne Stream.

The wheel is 26 feet diameter and one of the largest in Dorset. It is unique, having 72 ventilated, triple breast shot buckets in high breast shot array.

The wheel drove triple lift pumps delivering drinking water to a reservoir on the Bristol Road for Sherborne's population from 1869 to 1959 when electrical borehole pumps were installed.

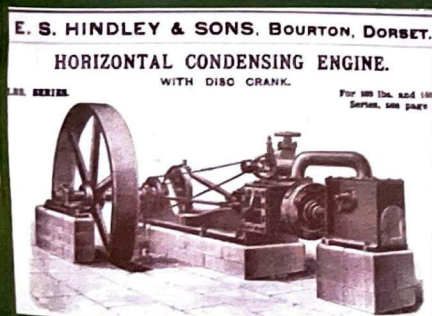
In 1876 a Hindley Steam Engine was added and ran until the early 1900's to provide an additional water supply. Unfortunatley it was sold for scrap.



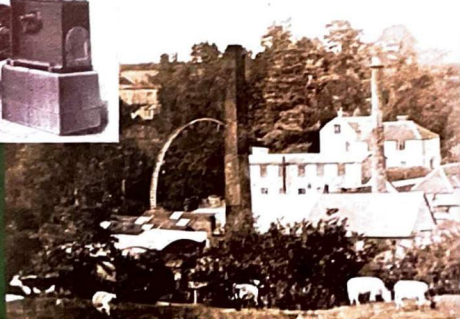
We now have a similar engine in a new building that runs under steam using a vertical coal fired boiler on open days.

This Hindley engine was originally installed at Gillingham Brickworks and has a 6½ ton, 11 feet 6 inches diameter flywheel, an 18 inch bore, 36 inch stroke, and an output of 60bhp.

There is also a smaller Hindley engine running and various stationary engines.



Our Visitor Centre houses historical exhibits, drawings, plans and has an audio-visual presentation.



The E S Hindley factory at Bourton, near Gillingham, Dorset

